

Structure – part no.
J U M O-01-10



- Diameter
- Standard
- Open
- Metric
- Liner
- iglidur® J

Special properties

- Open design for supported shafts
- Very low coefficients of friction while running dry
- Very high wear resistance
- Maintenance-free dry running
- Vibration dampening
- Very low moisture absorption
- High chemical resistance
- Suitable for rotating, oscillating and linear movements

* According to igus® testing method

► Page 64.37

Available from stock



DryLin® R
mm

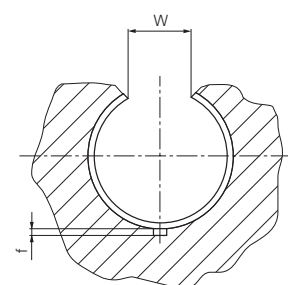
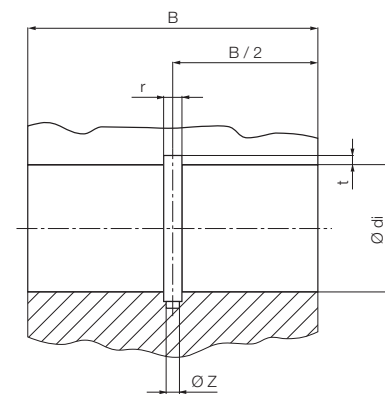
Dimensions [mm] and Weight

Part No.	d1 [mm]	Tolerance* [mm]	d2 [mm]	b1 [mm]	W [mm]	r [mm]	t [mm]	z [mm]	Weight [g]
JUMO-01-10	10	0,03-0,070	12	29	7,3	3,0	0,8	2,5	0,90
JUMO-01-12	12	0,03-0,070	14	31	9,0	3,0	0,8	3,0	1,16
JUMO-01-16	16	0,03-0,070	18	35	11,6	3,5	0,8	3,5	1,71
JUMO-01-20	20	0,03-0,070	23	44	12,0	5,0	0,8	3,5	4,16
JUMO-01-25	25	0,03-0,070	28	57	14,5	5,0	0,8	4,0	6,97
JUMO-01-30	30	0,04-0,085	34	67	16,6	5,0	0,8	4,0	12,38
JUMO-01-40	40	0,04-0,085	44	79	21,0	6,0	1,3	5,0	20,18
JUMO-01-50	50	0,05-0,100	55	99	25,5	7,0	1,3	6,0	38,60

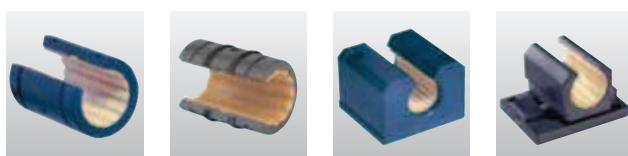
Installation Drawings

Housing Bore, Dimensions [mm]

Part No.	Nominal di Size		B [mm]	W [mm]	r [mm]	t [mm]	f [mm]	z [mm]
	Ø	H7						
JUMO-01-10	12	h10	29	7,3	3,0	1,0	1,0	2,6
JUMO-01-12	14	h10	32	9,0	3,0	1,0	1,5	3,1
JUMO-01-16	18	h10	36	11,6	3,5	1,0	1,7	3,6
JUMO-01-20	23	h10	45	12,0	5,0	1,0	2,0	3,6
JUMO-01-25	28	h10	58	14,5	5,0	1,0	2,0	4,1
JUMO-01-30	34	h10	68	16,6	5,0	1,0	2,0	4,1
JUMO-01-40	44	h10	80	21,0	6,0	1,5	2,5	5,1
JUMO-01-50	55	h10	100	25,5	7,0	1,5	2,5	6,1



Liners of the series JUMO-01 are used in:



- OJUM-01: ► P. 64.29
- OJUM-03: ► P. 64.30
- OJUM-06: ► P. 64.31
- OJUM-06 LL: ► P. 64.33