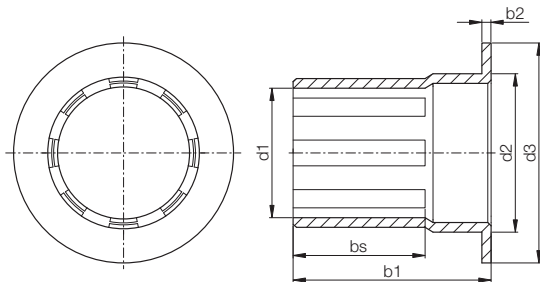
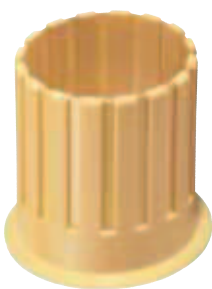




DryLin® R | Pressfit Bearing WLFM | mm



Structure – part no.
WLFM-1214-15



- b1
- d2
- d1
- Metric
- Flange
- Series L1
- Material: iglidur® L100



* Measured with a plug gauge

Available from stock

Special properties

- Pressfit bearing made of iglidur® L100
- Extremely wear resistant
- Low coefficient of friction
- Recommended tolerance for the shaft: h6-h10 (see iglus® shafts ► **chapter 65**)
- Recommended housing bore H7

Type F – Dimensions [mm]

Part No.	d1 [mm]	Tolerance* [mm]	d2 [mm]	b1 [mm]	bs [mm]
WLFM-1214-15	12	+ 0,02 ... + 0,04	14	20	15,0
WLFM-1618-16	16	+ 0,02 ... + 0,04	18	24	16,0
WLFM-2023-16	20	+ 0,04 ... + 0,08	23	30	16,5
WLFM-2528-21	25	+ 0,04 ... + 0,08	28	35	21,5
WLFM-3034-27	30	+ 0,04 ... + 0,08	34	42	27,0
WLFM-4044-32	40	+ 0,04 ... + 0,08	44	52	32,0
WLFM-5055-37	50	+ 0,04 ... + 0,08	55	63	37,5



DryLin® high-temperature bearings made of iglidur® X are used to support the sealing bar in this packaging machine. The XUM liners run without lubrication at temperatures of around 130° C, allowing a class leading output of 90 cycles/min.

Phone +49 - 22 03 - 96 49-145
Fax +49 - 22 03 - 96 49-334

iglus® GmbH
51147 Cologne

Internet www.igus.de
E-mail info@igus.de