

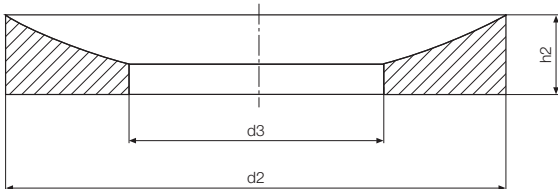
Data in mm

Structure – part no.  
**SA M-05**

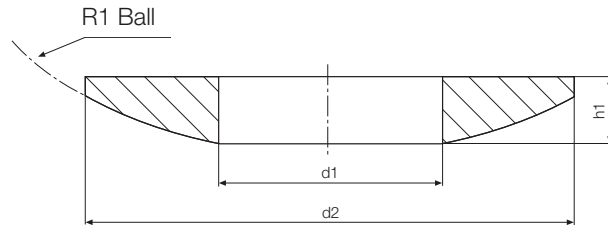


Dimension  
Metric  
Series SA

### Housing Pad



### Spherical Washer



### Special Properties

- Easy to install
- Compensation for alignment errors
- Prevent edge loads
- Very good friction and wear properties



#### Material

Housing: igumid G  
 ► Page 70.6  
 Spherical Bearing:  
 iglidur® W300  
 ► Chapter 5

### Load Data

igubal® – Spherical Thrust Bearing

Part Number	Maximum Static Axial Tensile Strength Short term	Maximum Static Axial Tensile Strength Long term
	[N]	[N]
SAM-05	4.000	2.000
SAM-06	5.000	2.500
SAM-08	8.000	4.000
SAM-10	10.000	5.000
SAM-12	12.000	6.000
SAM-16	17.000	8.500
SAM-20	22.000	11.000

### Dimensions [mm]

igubal® – Spherical Thrust Bearing

Part Number	d1	d3	d2	h1	h2	H	R1	Compensation	Total
	Housing Pad	Spherical Washer	[mm]	Ball Socket	Spherical Disk	Total Height	Radius [mm]	Angle	Weight [g]
	DIN 7168	DIN 7168		[mm]	[mm]	[mm]			
SAM-05	5,2	7,0	15,0	3,0	3,5	4,7	15,0	3°	0,9
SAM-06	6,2	7,5	16,0	3,0	4,0	5,3	16,0	3°	1,1
SAM-08	8,2	10,0	20,0	4,0	5,0	6,8	20,0	2°	2,2
SAM-10	10,2	12,0	24,0	4,5	5,5	7,5	24,0	2°	3,4
SAM-12	12,5	14,5	30,0	5,0	6,0	8,0	32,0	2°	5,9
SAM-16	16,5	19,0	36,0	5,5	6,5	8,7	40,0	2°	8,5
SAM-20	20,2	23,0	44,0	6,0	7,0	8,6	45,0	2°	12,8



Spherical Thrust Bearings  
SAM  
mm

Phone +49 - 22 03 - 96 49-145  
 Fax +49 - 22 03 - 96 49-334

