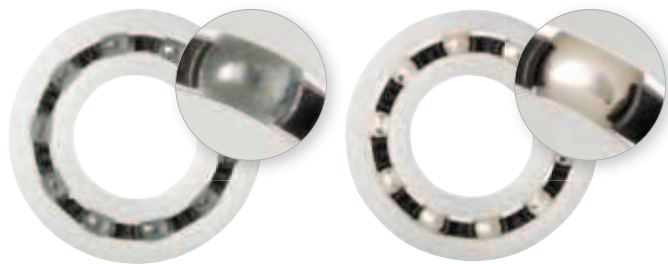
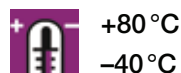


xirodur® B180 Polymer Ball Bearings | Product Range

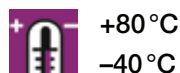
Radial deep-groove ball bearings



Made of xirodur® B180
PA cage, glass balls



Made of xirodur® B180
PA cage, stainless steel balls



xiros® B180 polymer ball bearings are for use with temperatures up to +80 °C. The specially developed material xirodur® B180 provides significantly longer life times at a lower cost.

- Lubrication- and maintenance-free
- Non-magnetic and washable
- Corrosion-resistant
- Predictable lifetime
- Low weight
- For shaft diameters 3–60 mm
- Electrically insulating

Dimensions [mm]

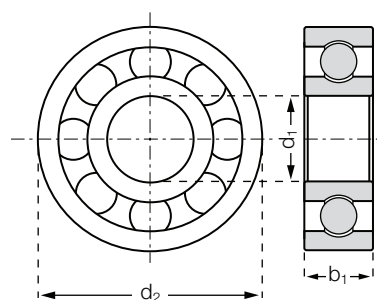
Part number	Race	Cage	Ball	Inner-Ø d1	Outer-Ø d2	Width b1
BB-623-B180-10-ES	B180	PA	1.4401	3	10	4
BB-625-B180-10-ES New!	B180	PA	1.4401	5	16	6
BB-626-B180-10-ES	B180	PA	1.4401	6	19	6
BB-608-B180-10-ES	B180	PA	1.4401	8	22	7
BB-6000-B180-10-ES	B180	PA	1.4401	10	26	8
BB-6001-B180-10-ES	B180	PA	1.4401	12	28	8
BB-6002-B180-10-ES New!	B180	PA	1.4401	15	32	9
BB-6003-B180-10-ES	B180	PA	1.4401	17	35	10
BB-6004-B180-10-ES	B180	PA	1.4401	20	42	12
BB-6005-B180-10-ES	B180	PA	1.4401	25	47	12
BB-6006-B180-10-ES*	B180	PA	1.4401	30	55	13
BB-6007-B180-10-ES*	B180	PA	1.4401	35	62	14
BB-6008-B180-10-ES*	B180	PA	1.4401	40	68	15
BB-6009-B180-10-ES*	B180	PA	1.4401	45	75	16
BB-6010-B180-10-ES*	B180	PA	1.4401	50	80	16
BB-6011-B180-10-ES*	B180	PA	1.4401	55	90	18
BB-6012-B180-10-ES*	B180	PA	1.4401	60	95	18
BB-623-B180-10-GL	B180	PA	Glass	3	10	4
BB-625-B180-10-GL New!	B180	PA	Glass	5	16	6
BB-626-B180-10-GL	B180	PA	Glass	6	19	6
BB-608-B180-10-GL	B180	PA	Glass	8	22	7
BB-6000-B180-10-GL	B180	PA	Glass	10	26	8
BB-6001-B180-10-GL	B180	PA	Glass	12	28	8
BB-6002-B180-10-GL New!	B180	PA	Glass	15	32	9
BB-6003-B180-10-GL	B180	PA	Glass	17	35	10
BB-6004-B180-10-GL	B180	PA	Glass	20	42	12
BB-6005-B180-10-GL	B180	PA	Glass	25	47	12
BB-6006-B180-10-GL*	B180	PA	Glass	30	55	13
BB-6007-B180-10-GL*	B180	PA	Glass	35	62	14
BB-6008-B180-10-GL*	B180	PA	Glass	40	68	15
BB-6009-B180-10-GL*	B180	PA	Glass	45	75	16
BB-6010-B180-10-GL*	B180	PA	Glass	50	80	16
BB-6011-B180-10-GL*	B180	PA	Glass	55	90	18
BB-6012-B180-10-GL*	B180	PA	Glass	60	95	18

xirodur® B180 Polymer Ball Bearings | Product Range

Radial deep-groove ball bearings



Order key



BB-623-B180-10-GL



Ball material

GL = glass

ES = stainless steel

Cage material

10 = PA

Race material

xirodur® B180

Dimensions acc. to

DIN 625-1

Ball bearing



**delivery
time**

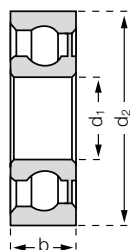
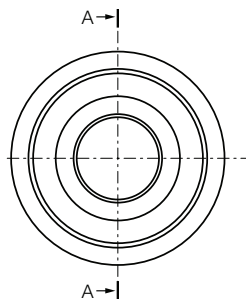
available from stock

* on request

Technical Data

Part number	Max. stat. bearing load axial [N]	Stat. bearing load [N]	Dynamic bearing load [N]	Max. speed [rpm]	Weight [g]
BB-623-B180-10-ES	30	25	35	4,500	0.4
BB-625-B180-10-ES New!	75	40	58	3,100	1.6
BB-626-B180-10-ES	95	50	70	2,600	2.2
BB-608-B180-10-ES	165	60	84	2,200	3.9
BB-6000-B180-10-ES	285	85	119	1,900	6.1
BB-6001-B180-10-ES	315	105	147	1,750	6.9
BB-6002-B180-10-ES New!	338	146	196	1,600	8.9
BB-6003-B180-10-ES	360	180	250	1,400	11.1
BB-6004-B180-10-ES	400	210	294	1,150	20.2
BB-6005-B180-10-ES	520	240	360	1,050	23.9
BB-6006-B180-10-ES*	640	280	420	900	35.0
BB-6007-B180-10-ES*	720	320	480	800	47.0
BB-6008-B180-10-ES*	800	350	520	750	56.3
BB-6009-B180-10-ES*	900	380	560	650	71.5
BB-6010-B180-10-ES*	950	390	580	600	83.1
BB-6011-B180-10-ES*	1,000	400	600	550	125.2
BB-6012-B180-10-ES*	1,100	420	640	500	129.6
BB-623-B180-10-GL	30	25	35	4,500	0.3
BB-625-B180-10-GL New!	75	40	58	3,100	1.0
BB-626-B180-10-GL	95	50	70	2,600	1.7
BB-608-B180-10-GL	165	60	84	2,200	2.6
BB-6000-B180-10-GL	285	85	119	1,900	4.0
BB-6001-B180-10-GL	315	105	147	1,750	4.5
BB-6002-B180-10-GL New!	338	146	196	1,600	6.2
BB-6003-B180-10-GL	360	180	250	1,400	7.9
BB-6004-B180-10-GL	400	210	294	1,150	13.6
BB-6005-B180-10-GL	520	240	360	1,050	16.7
BB-6006-B180-10-GL*	640	280	420	900	24.2
BB-6007-B180-10-GL*	720	320	480	800	31.3
BB-6008-B180-10-GL*	800	350	520	750	39.1
BB-6009-B180-10-GL*	900	380	560	650	48.6
BB-6010-B180-10-GL*	950	390	580	600	56.4
BB-6011-B180-10-GL*	1,000	400	600	550	84.4
BB-6012-B180-10-GL*	1,100	420	640	500	85.6

Radial deep-groove ball bearings with shield



Made of xirodur® B180

PA cage, stainless steel or glass balls



+80 °C

-40 °C

xiros® polymer ball bearings made of xirodur® B180 now with shield to prevent the penetration of dirt and other abrasive particles. The one-sided shield is fixed to the inner race. The other side is protected by the enclosed ball cage.

- Lubrication- and maintenance-free
- Dirt-repellant
- Corrosion-resistant
- Low weight
- For shaft diameter 3–20 mm
- Electrically insulating

Dimensions [mm]

Part number	Race	Cage	Ball	Inner-Ø	Outer-Ø	Width
				d1	d2	b1
BB-623-B180-10-ES-C	B180	PA	1.4401	3	10	4
BB-626-B180-10-ES-C	B180	PA	1.4401	6	19	6
BB-608-B180-10-ES-C	B180	PA	1.4401	8	22	7
BB-6000-B180-10-ES-C	B180	PA	1.4401	10	26	8
BB-6001-B180-10-ES-C	B180	PA	1.4401	12	28	8
BB-6003-B180-10-ES-C	B180	PA	1.4401	17	35	10
BB-6004-B180-10-ES-C	B180	PA	1.4401	20	42	12
BB-623-B180-10-GL-C	B180	PA	Glass	3	10	4
BB-626-B180-10-GL-C	B180	PA	Glass	6	19	6
BB-608-B180-10-GL-C	B180	PA	Glass	8	22	7
BB-6000-B180-10-GL-C	B180	PA	Glass	10	26	8
BB-6001-B180-10-GL-C	B180	PA	Glass	12	28	8
BB-6003-B180-10-GL-C	B180	PA	Glass	17	35	10
BB-6004-B180-10-GL-C	B180	PA	Glass	20	42	12

Technical Data

Part number	Max. static bearing load	Static bearing load	Dynamic bearing load	Max. speed	Weight
	axial [N]	[N]	[N]	[rpm]	[g]
BB-623-B180-10-ES-C	30	25	35	4,500	0.4
BB-626-B180-10-ES-C	95	50	70	2,600	2.5
BB-608-B180-10-ES-C	165	60	84	2,200	4.0
BB-6000-B180-10-ES-C	285	85	119	1,900	6.3
BB-6001-B180-10-ES-C	315	105	147	1,750	7.1
BB-6003-B180-10-ES-C	360	180	250	1,400	11.5
BB-6004-B180-10-ES-C	400	210	294	1,150	19.7
BB-623-B180-10-GL-C	30	25	35	4,500	0.4
BB-626-B180-10-GL-C	95	50	70	2,600	1.8
BB-608-B180-10-GL-C	165	60	84	2,200	2.7
BB-6000-B180-10-GL-C	285	85	119	1,900	4.1
BB-6001-B180-10-GL-C	315	105	147	1,750	4.7
BB-6003-B180-10-GL-C	360	180	250	1,400	8.4
BB-6004-B180-10-GL-C	400	210	294	1,150	14.2

New in this catalog!

xirodur® B180 Polymer Ball Bearing | Product Range

xiros®
polymer
ball
bearings

Radial deep-groove ball bearings,
thin bearing



Made of xirodur® B180
glass-/stainless steel balls



+80 °C
-40 °C



Order key

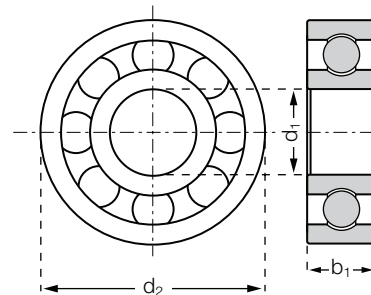
BB-16006-B180-10-ES



Ball material
ES = stainless steel
GL = glass
Cage material
xirodur® B180
Race material
xirodur® B180
Dimensions acc. to
DIN 625-1
Ball bearing

The first thin ball bearing has joined the product group of xirodur® B180 polymer ball bearings! The xiros® thin bearing only requires nearly half of the space compared to our standard xiros® polymer ball bearings. Used up to 80 °C, they are corrosion resistant, as well maintenance- and lubrication free.

- Extremely small space; space-saving
- Low friction
- Low weight
- For temperatures up to 80 °C



Technical Data

Part number	Max. static bearing load axial [N]	Static bearing load [N]	Dynamic bearing load [N]	Max. speed [rpm]	Weight [g]
BB-16006-B180-10-ES	640	280	420	900	18.1
BB-16006-B180-10-GL	640	280	420	900	12.5

Dimensions [mm]

Part number	Race	Ball	d1	d2	d3
BB-16006-B180-10-ES	B180	1.4401	30	55	9
BB-16006-B180-10-GL	B180	Glass	30	55	9



delivery from stock
time



prices price list online

www.igus.eu/eu/xirodur-B180